

“This reprint might contain references to “Merck” or “Merck KGaA”, which refer to (1) Merck KGaA, Darmstadt, Germany; (2) an affiliate of Merck KGaA, Darmstadt, Germany; or (3) one of the businesses of Merck KGaA, Darmstadt, Germany, which operate as EMD Serono in the healthcare, MilliporeSigma in the life science and EMD Electronics in the electronics business in the U.S. and Canada.

There are two different, unaffiliated companies that use the name “Merck”. Merck KGaA, Darmstadt, Germany, which is providing this content, uses the firm name “Merck KGaA, Darmstadt, Germany” and the business names EMD Serono in the healthcare, MilliporeSigma in the life science and EMD Electronics in the electronics business in the U.S. and Canada. The other company, Merck & Co., Inc. holds the rights in the trademark “Merck” in the U.S. and Canada. Merck & Co., Inc. is not affiliated with or related to Merck KGaA, Darmstadt, Germany, which owns the “Merck” trademark in all other countries of the world.”

High Adherence to Treatment With Cladribine Tablets for Multiple Sclerosis During the COVID-19 Pandemic: Results From Patient Support Programmes

J. Oh¹, M.S. Freedman², K. Vernon³, M. Ayer⁴, C. Lemieux⁵, K. Morgan⁶, T. Quinn⁷, T. Vella⁷, A. Allignol⁸, M. Stein⁹, E. Verdun di Cantogno¹⁰, M. Sabidó⁸

¹Division of Neurology, Department of Medicine, St Michael's Hospital, University of Toronto, Toronto, ON, Canada; ²University of Ottawa, Department of Medicine and the Ottawa Hospital Research Institute, Ottawa, ON, Canada; ³Salford Royal NHS Foundation Trust, Manchester, UK; ⁴Southampton General Hospital, Southampton, UK; ⁵EMD Inc., Mississauga, ON, Canada (an affiliate of Merck KGaA); ⁶Merck Serono Ltd, Feltham, UK (an affiliate of Merck KGaA); ⁷Merck Healthcare Pty Ltd, Macquarie Park, NSW, Australia (an affiliate of Merck KGaA); ⁸Merck Healthcare KGaA, Darmstadt, Germany; ⁹Cytel Inc., Geneva, Switzerland; ¹⁰EMD Serono Research & Development Institute, Inc., Billerica, MA, USA (an affiliate of Merck KGaA)



GET POSTER PDF
Copies of this poster obtained through QR (Quick Response) code are for personal use only and may not be reproduced without written permission of the authors

CONCLUSIONS

The existence of a robust nurse/pharmacy-led PSP enables valuable data collection and likely facilitates adherence, even during a global pandemic that put healthcare systems under pressure.

Although time to year 2 CladT initiation was more variable during the COVID-19 pandemic, treatment adherence to cladribine tablets was high and consistent between participating countries, and was not strongly influenced by the COVID-19 pandemic.

INTRODUCTION

Adveva[®] is a multi-national nurse/pharmacy-led patient support programme (PSP) that collects treatment-related clinical information.

- Encouraging** patient self-report adherence
- Facilitating** the return of patients for Year 2 treatment
- Empowering** people with multiple sclerosis (MS) to look after their health

OBJECTIVES



Evaluate treatment adherence during Year 2 of treatment with Cladribine tablets (CladT)¹ based on local label guidance in Australia, Canada, and the UK, and whether there was an effect of the Coronavirus 2019 (COVID-19) pandemic on treatment adherence.

METHODS

05 Dec 2017 **Data Collected** 28 Feb 2021

- Demographics and date of CladT treatment initiation of Year 1 and Year 2 were recorded from patients in Australia, Canada and the UK (Figure 1).
 - Patients were monitored using telephone check-in from treatment initiation until cut-off date, loss to follow-up, or treatment discontinuation.
- Time to Year 2 treatment initiation was estimated among patients with ≥ 18 months of follow-up, overall, then split into 2 categories: before COVID-19 and during COVID-19.

Restrictions Related to the COVID-19 Pandemic Were Imposed on:

Australia – 16 March 2020²

Canada – 13 March 2020³

UK – 23 March 2020⁴

RESULTS

Figure 1.

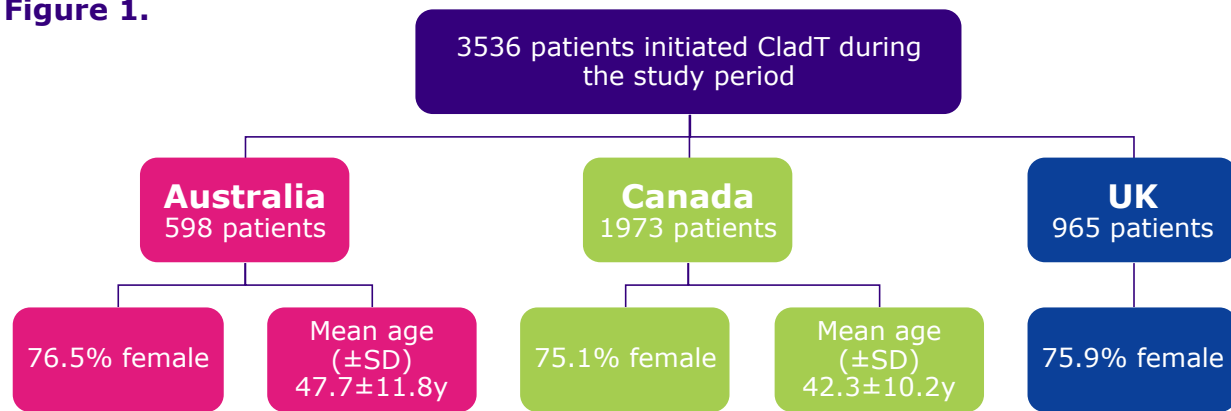


Figure 3. Among Patients with ≥ 18 Months of Follow-up Since Year 1 Initiation, the Vast Majority had Initiated Year 2

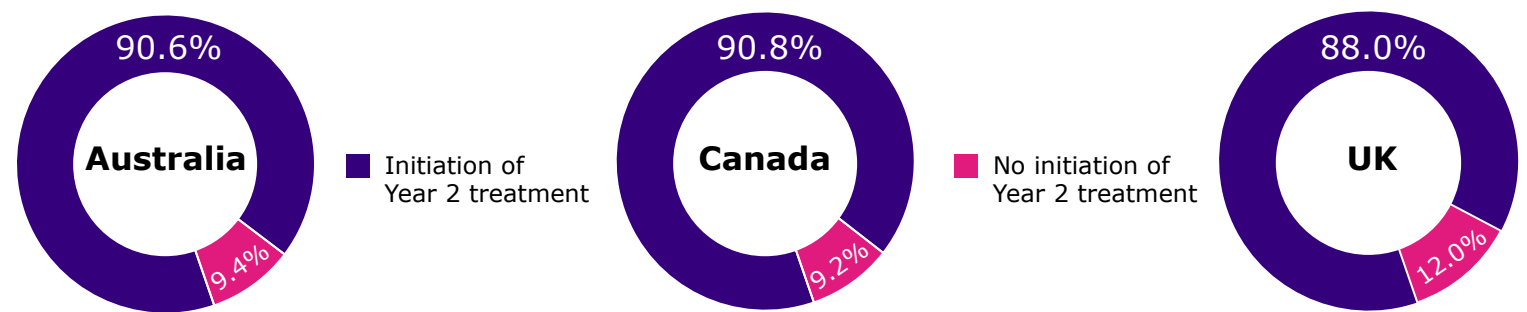


Figure 4. Time from Initiation of CladT to Start of Year 2 Therapy

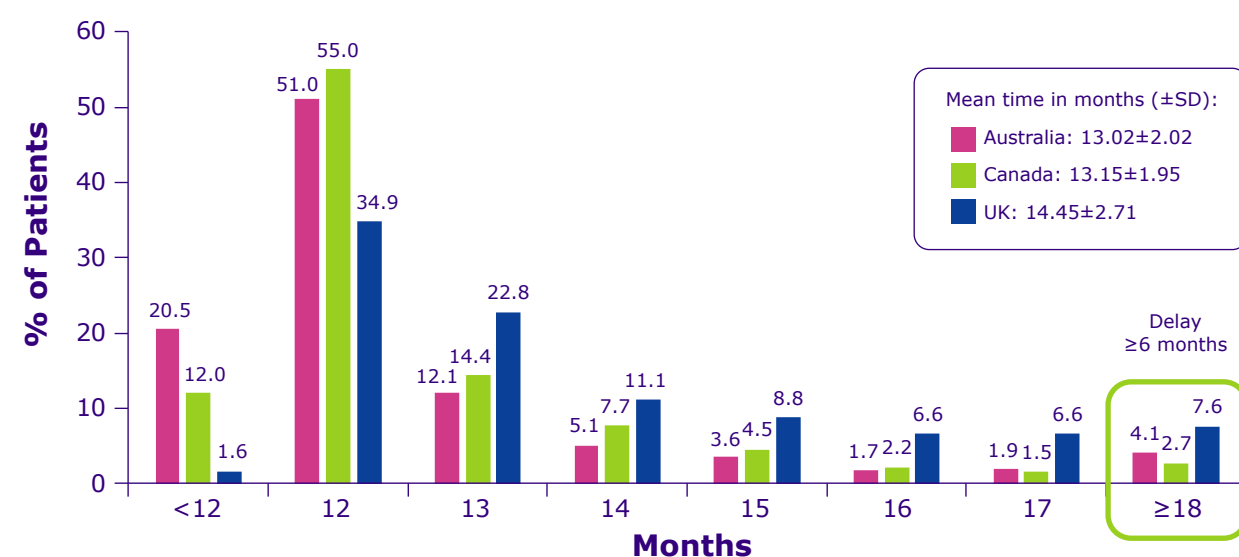


Figure 2. Most Patients had Other Disease-Modifying Therapy (DMT) Prior to CladT

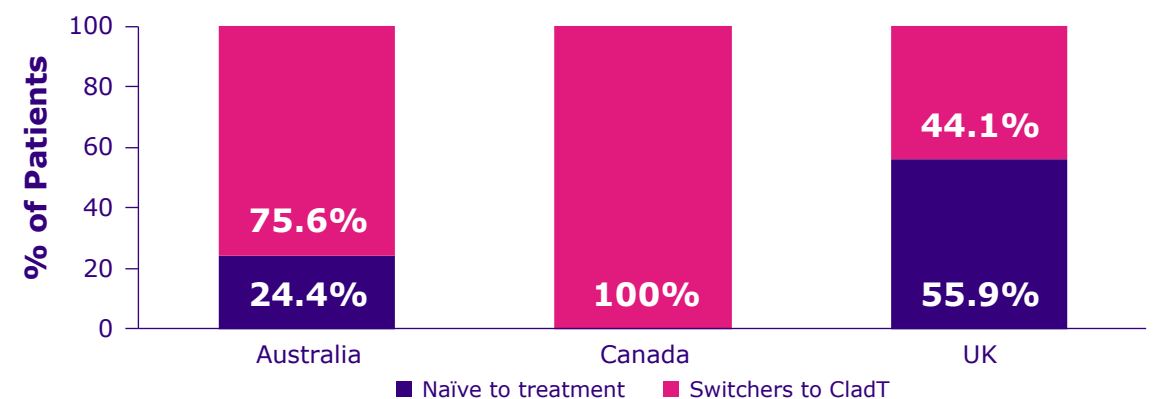
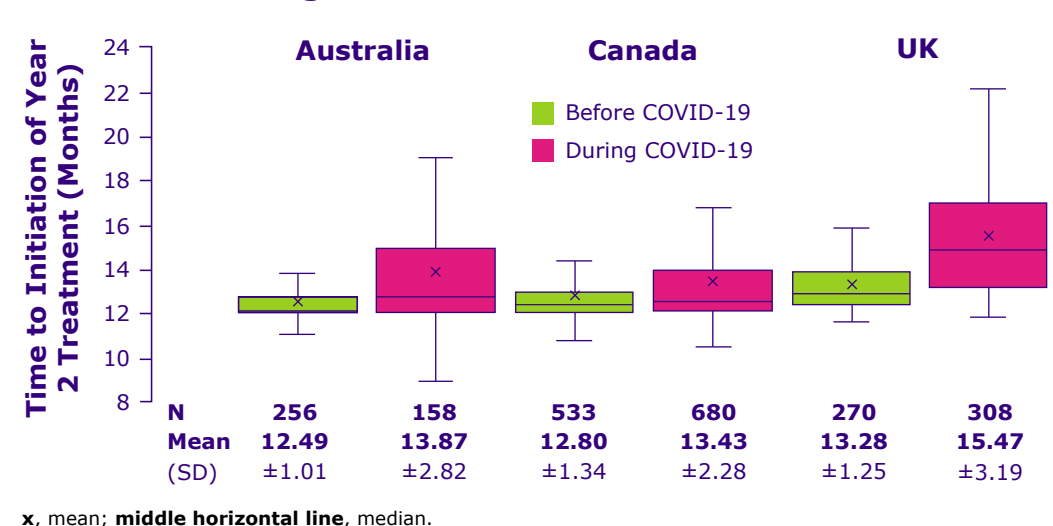


Figure 5. Mean Time to Initiation of Year 2 Treatment was Similar Before and During the COVID-19 Pandemic in All Countries



1. Mavenclad 10 mg Tablets. Summary of Product Characteristics (SmPC). 2021. https://www.ema.europa.eu/en/documents/product-information/mavenclad-epar-product-information_en.pdf; 2. Australia COVID-19 pandemic declaration: https://www.ap.gov.au/About_Parliament/Parliamentary_Departments/Parliamentary_Library/pubs/rp/rp2021/Chronologies/COVID-19StateTerritoryGovernmentAnnouncements; 3. Canada COVID-19 pandemic declaration: <https://www.ourcommons.ca/DocumentViewer/en/43-1/house/sitting-31/hansard>; 4. UK COVID-19 pandemic lockdown: https://en.wikipedia.org/wiki/COVID-19_pandemic_in_the_United_Kingdom.

Disclosures: JO has received research support from Biogen, EMD Serono, and Roche, and has received personal compensation for consulting from Biogen, Celgene (BMS), EMD Serono, Novartis, Roche, and Sanofi-Genzyme; MSF has received honoraria or consultation fees from Actelion (Janssen/JB), Alexion, Biogen, Celgene (BMS), EMD Inc., Canada (an affiliate of Merck KGaA), EMD Serono, Inc., USA (an affiliate of Merck KGaA), Merck, Novartis, Sanofi-Genzyme, Roche, and Teva Canada Innovation; has received research support unrelated to this study from EMD Inc., Canada (an affiliate of Merck KGaA), Roche, and Sanofi-Genzyme; Canada: was a member of a company advisory board, board of directors, or other similar group for Actelion (Janssen/JB), Alexion, Atara Biotherapeutics, Bayer, Biogen, Celgene (BMS), Celene Nanomedicine, GRI Bio, Magenta Therapeutics, Merck, MedDay, Novartis, Roche, Sanofi-Genzyme, and Teva Canada Innovation; and has been a participant in a company sponsored speaker's bureau for EMD Serono, Inc., USA (an affiliate of Merck KGaA) and Sanofi-Genzyme; KV has received lecture fees, travel grants, and fees for consulting from Bayer, Biogen, Genzyme, Merck, Novartis, Roche, and Teva; MA serves on scientific advisory boards, has received funding for travel and/or speaker honoraria, chairing meetings and receives educational support from Biogen, Celgene (BMS), Merck, Novartis, Roche, and Sanofi; CL is an employee of EMD Inc., Mississauga, ON, Canada (an affiliate of Merck KGaA); KM is an employee of Merck Serono Ltd, Feltham, UK (an affiliate of Merck KGaA); TO and TV are employees of Merck Healthcare Pty Ltd, Macquarie Park, NSW, Australia (an affiliate of Merck KGaA); AA is a former employee of Merck Healthcare KGaA, Darmstadt, Germany. Current address: Daiichi Sankyo Europe GmbH, Munich, Germany; MST is an employee of Cytel Inc., Geneva, Switzerland; EVGC is an employee of EMD Serono Research & Development Institute, Inc., Billerica, MA, USA (an affiliate of Merck KGaA); HSA is an employee of Merck Healthcare KGaA, Darmstadt, Germany.

This study was sponsored by Merck (CrossRef Funder ID: 10.13039/100009945). Medical writing assistance was provided by Anna Khan and Ella Palmer of InScience Communications, Springer Healthcare Ltd, UK, and was funded by Merck Healthcare KGaA, Darmstadt, Germany.

Presented at ECTRIMS 2021 Virtual Congress | 13–15 October

Data collection and analysis was sponsored by Merck (CrossRef Funder ID: 10.13039/100009945)

FOR REACTIVE MEDICAL USE ONLY